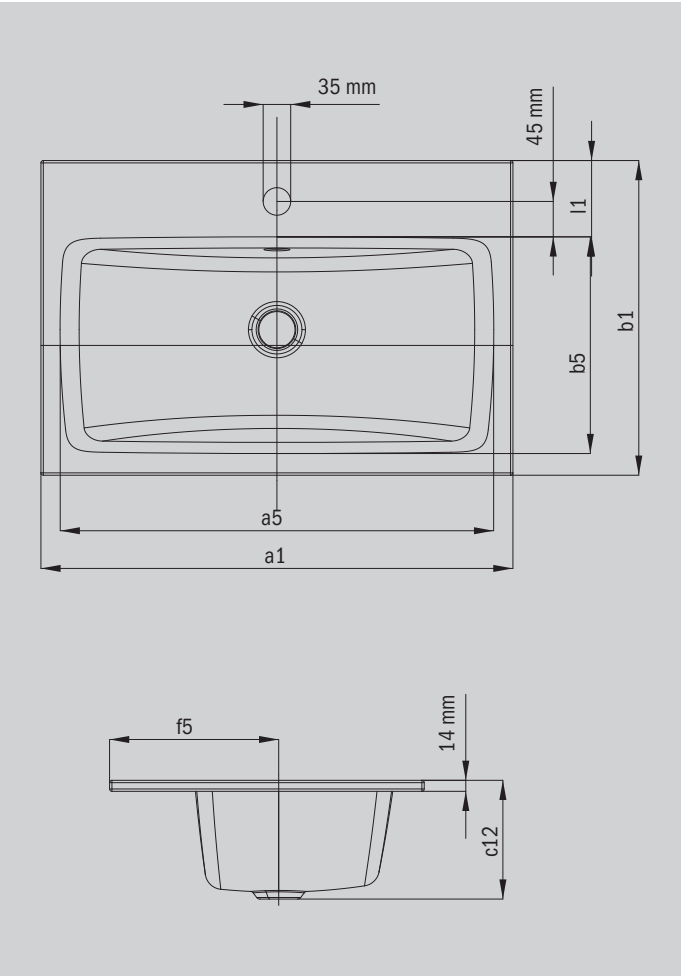


OBJECT Q BUILT-IN WASHBASIN

- Timeless design - available in round and rectangular versions
- All-round installation rim for particularly easy installation
- Perfect in combination with a wide variety of console materials
- Made of KALDEWEI steel enamel



Similar illustration

Model		3196
External length [mm]	a ₁	600 mm
Internal length [mm]	a ₅	551 mm
External width [mm]	b ₁	400 mm
Internal width [mm]	b ₅	275 mm
Depth inside [mm]	c ₁	149 mm
Height of rim [mm]	c ₁₂	14 mm
Distance basin surface to bottom edge of waste hole [mm]	c ₁₂	151 mm
Distance rear edge to centre of waste hole [mm]	f ₅	215 mm
Depth of tap deck [mm]	l ₁	97 mm
Distance tap holes to edge [mm]	l ₂	45 mm
Diameter of centre tap hole [mm]	l ₉	Ø 35 mm
Net weight [kg]		7 kg