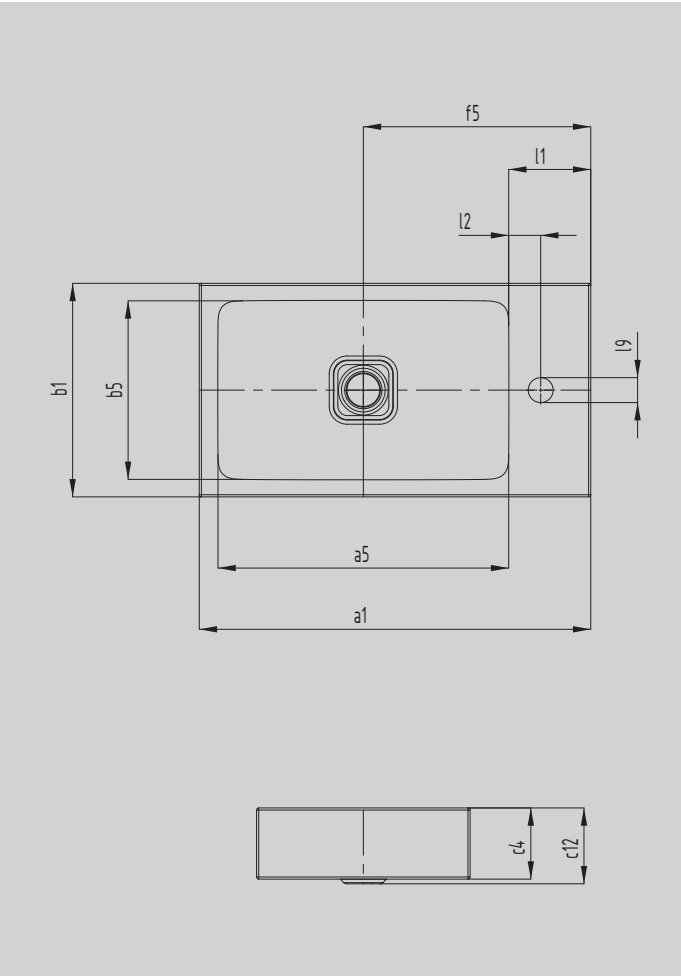


# CONO COUNTERTOP HANDBASIN

- washbasin with premium character exudes elegance and harmony
- optimally integrated enamelled waste accentuates the underlying geometry of the washbasin
- perfectly complements the CONO range
- unusually generous rim provides space for fittings or individual accessories



Similar illustration



Model		3074
External length	a <sub>1</sub>	550 mm
Internal length	a <sub>5</sub>	409 mm
External width	b <sub>1</sub>	300 mm
Internal width	b <sub>5</sub>	251 mm
Height of rim	c <sub>4</sub>	100 mm
Distance basin surface to bottom edge of waste hole	c <sub>12</sub>	102 mm
Distance rear edge to centre of waste hole	f <sub>5</sub>	320 mm
Depth of tap deck	l <sub>1</sub>	116 mm
Distance tap holes to edge	l <sub>2</sub>	45 mm
Diameter of centre tap hole	l <sub>9</sub>	Ø 35 mm
Net weight		8 kg